

Porsche 718 Boxster & Cayman Outer Grilles Fitting Instructions

(PLEASE NOTE LH & RH ARE REFERENCED AS LOOKING FROM OUTSIDE FRONT OF CAR)

Kit Contents: -

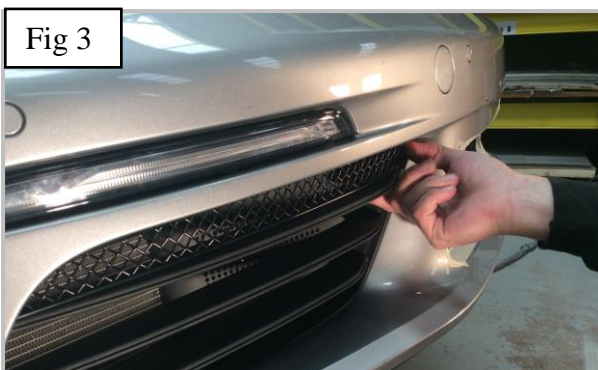
- 1. off LH Upper Grille
- 1. off LH Upper Centre Grille ●
- 1. off LH Lower Centre Grille ●
- 1. off LH Lower Grille
- 1. off RH Upper Grille
- 1. off RH Upper Centre Grille
- 1. off RH Lower Centre Grille
- 1. off RH Lower Grille
- 4. off No6 x 1½" Screws



Upper Side Mesh Grille Fitting Instructions **(Please fit the grilles in this order)**

<https://www.youtube.com/watch?v=aUDyEvIE-9A>

1. Fit masking tape around all of the apertures to protect the paintwork while fitting as shown in fig 1.
2. Locate Grille Level with aperture.
3. Guide the grille into the aperture and clip the outer side into place as shown in fig 2.
4. Clip the inner side into place and use a long thin screwdriver to secure the grille in place as shown in figs 3 & 4
5. Repeat steps 1-4 for the opposite side.
6. Remove the tape and the grilles are now complete.



THANK YOU FOR CHOOSING A ZUNSPORT PRODUCT.

Lower Side Mesh Grille Fitting Instructions

<https://www.youtube.com/watch?v=aUDyEvIE-9A>

(Not on Fitting Video)



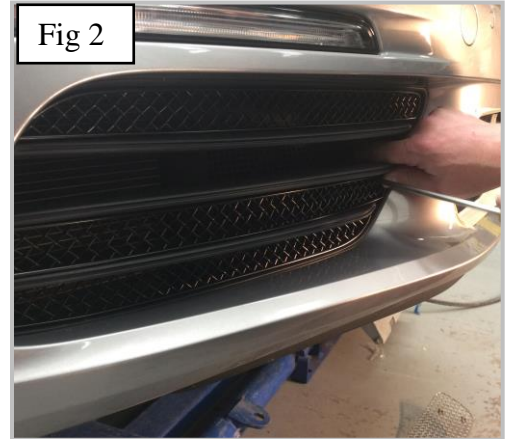
1. Fit masking tape around all of the apertures to protect the paintwork while fitting.
2. Locate Grille Level with aperture(Fig 1).
3. Insert the screw into the diamond through mesh and tighten down as shown in fig 2 then repeat to the other screw (do not over tighten).
4. Repeat steps 1, 2 and 3 to the opposite grille.
5. Remove the tape and the grilles are now complete.



Lower Centre Side Mesh Grille Fitting Instructions

<https://www.youtube.com/watch?v=aUDyEvIE-9A>

1. Fit masking tape around the apertures to protect the paintwork while fitting.
2. Firstly locate the outer part of the grille into the aperture as shown in fig 1.
3. Locate the inner bracket making sure it clips behind the aperture.
4. Once grille is in correct position use a long thin screwdriver to secure the grille into place as shown in fig 2.
5. Repeat steps 1, 2 and 3 to the opposite grille.
6. The grilles are now complete.



Upper Centre Side Mesh Grille Fitting Instructions

<https://www.youtube.com/watch?v=aUDyEvIE-9A>



1. Fit masking tape around the apertures to protect the paintwork while fitting.
2. Firstly locate the outer part of the grille into the aperture as shown in fig 1.
3. Locate the inner bracket making sure it clips behind the aperture as shown in fig 2.
4. Once the grille is in correct position, use a long thin screwdriver to secure the grille into place as shown in fig 3.
5. Repeat steps 1, 2 and 3 to the opposite grille.
6. The grilles are now complete.

